

# Association between physical and geochemical characteristics of thermal springs and algal diversity in Limpopo Province, South Africa

CZ Jonker<sup>1\*</sup>, C van Ginkel<sup>2</sup> and J Olivier<sup>1</sup>

<sup>1</sup>University of South Africa, Department of Environmental Sciences, School of Agriculture and Environmental Sciences, PO Box X6, Florida 1710, South Africa

<sup>2</sup>Cripsis Environment – Environmental Services, 20<sup>th</sup> Ave, Rietondale, Pretoria, South Africa

## Abstract

Algal species commonly occur in thermophilic environments and appear to have very wide geographical distributions. Presence of algal species is strongly influenced by temperature, pH and mineral content of thermal waters. No research has previously been documented on the algal diversity in South African thermal springs. This paper describes the algal distribution in 6 thermal springs in Limpopo Province, South Africa, and attempts to link this to the physical and geochemical properties of the springs. Water samples were collected from Mphephu, Siloam, Tshipise, Sagole, Eiland and Soutini thermal springs and algae identified. Temperature, pH and TDS were measured on site and water samples analysed for macro- and trace-elements. Cyanophyta was the algal group most often present, followed by Bacillariophyta, Chlorophyta, Euglenophyta and Dinophyta. Some of the algae were present in waters with pH ranging from 7.1–9.7 and temperatures ranging from 40–67°C. Others (the cyanobacteria and green algae: Nodularia, Schizothrix, Anacystis, Coelastrum, Chlorella and Spirogyra) only occurred in high temperature (60+°C) and pH>9 waters, while a number of diatoms (Synedra, Aulacoseira, Nitzschia, Cyclotella, Gyrosigma, Craticula) occurred exclusively at temperatures <45°C and pH values <8. Algae were also present in waters with fluoride values exceeding that which is considered safe for human consumption as well as in waters relatively rich in uranium, rubidium, vanadium and manganese. It was clear that the occurrence of algae coincided with specific geological formations. These algae could act as indicator species of geology and heavy metals.

**Keywords:** thermal springs, Limpopo Province, algae, diversity, geochemical

## Introduction

Algae are common in water and soil habitats, at different geographic latitudes, and on all continents. They occur in waters with different degrees of salinity, trophicity, organic matter, and hydrogen ions, and at various temperatures. Thermal spring algae communities have long attracted the attention of microbial ecologists because of their unique adaptations to harsh environments (Sompong et al., 2005). Although algae seem to be widespread in thermal waters, some thermophilic organisms have distinctive geographic distribution patterns, with their distribution being limited by their ecological adaptation, resistance and tolerance to extreme environments.

Thermophilic algae include members of the Cyanophyta (blue-green bacteria; cyanobacteria), Chlorophyta (green algae), Bacillariophyta (diatoms), Euglenophyta and Dinophyta. The occurrence of cyanobacteria is especially widespread in thermal environments; with members of the phylum inhabiting thermal springs all over the world (Winterbourn, 1969; Pelczar et al., 1988; Seckbach, 2007). Many species of cyanobacteria have been isolated from thermal springs in the Yellowstone National Park, from the sulphur hot springs in the Himalayas and from springs in Jordan. The most abundant cyanobacteria genera identified in these thermal springs were Phormidium, Schizothrix, Calothrix, Tolypothrix, Microcystis, Chroococcus, Oscillatoria, Scytonema, Synechococcus,

Fischerella and Lyngbya (Prasad and Srivastava, 1965; Mann and Schlichting, 1967; Stockner, 1967; Oren et al., 2009). These cyanobacteria appear to be favoured by high temperatures, low light, low nutrient (particularly nitrogen) availability and high predation pressure. Research on diatoms has revealed that Rhopalodia, Denticula, Mastogloia, Navicula, Nitzschia, Pinnularia, Caloneis and Achnanthes are some of the genera found in thermal waters (Stockner, 1967).

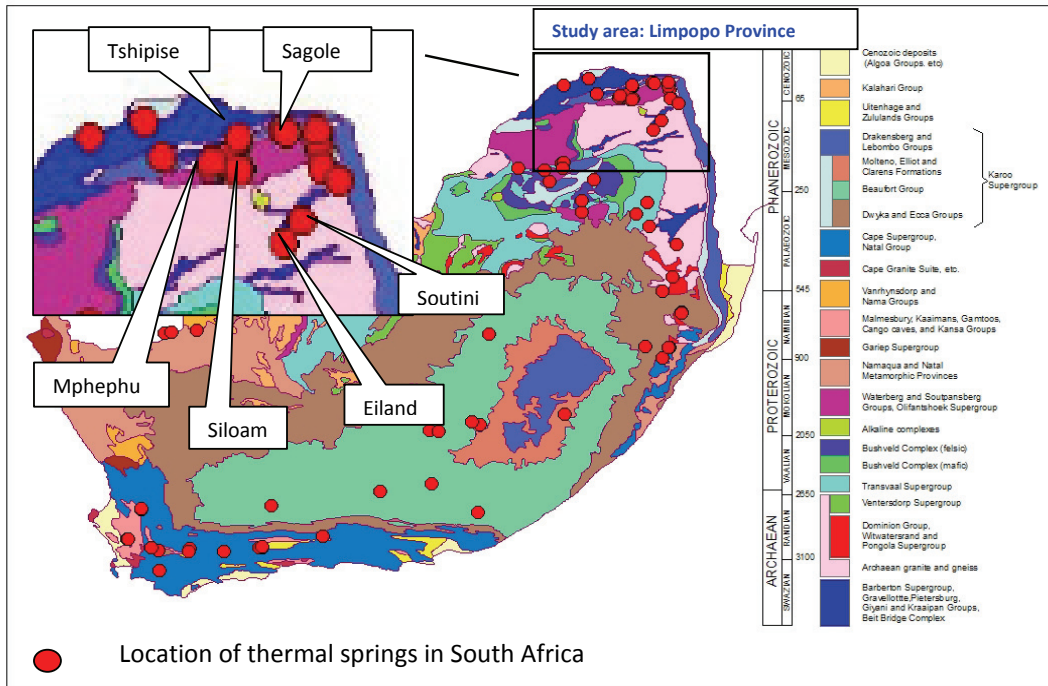
The diversity of algae in thermal springs is influenced by the mineral composition and water temperature of the spring (Castenholz, 1969; Sember, 2002; Sompong et al., 2005). Generally, diversity of algal species increases from 0°C to 25°C and decreases at temperatures >30°C, while biomass increases with temperature from approximately 0 to 30°C and decreases from 30 to 40°C (Dallas, 2008). According to Atlas and Bartha (1987), algae are restricted to growth below 55°C, while Winterbourn (1969) reported an upper temperature limit for algal growth of 68°C. Because of the shallowness and clarity of most thermal waters and the exposure of many hot springs to high light intensities, various types of 'sun adaptations' may have occurred in many thermophilic organisms (Castenholz, 1969).

Many algae appear to have adapted to high salinity and/or high concentrations of specific ions. Most alkaline hot springs contain between 1 000 and 2 000 mg of total dissolved solids (TDS) per litre; some have salinities higher than that of seawater (Castenholz, 1969). Generally, cyanobacteria prefer alkaline environments and exhibit a wide range of tolerance to salinity (Castenholz, 1969; Sember, 2002; Van Ginkel, 2004). Several cyanobacteria species have been isolated from thermal springs in Greece with sodium chloride concentrations of more than

\* To whom all correspondence should be addressed.

☎ +27 78 109 8044; e-mail: [jonkecz@unisa.ac.za](mailto:jonkecz@unisa.ac.za)

Received 28 March 2012; accepted in revised form 7 January 2013.



**Figure 1**  
Study areas in Limpopo Province (Olivier et al., 2011)

15 000 mg/l (Castenholz, 1969). An abundance of halophilic algae species belonging to the Cyanophyta, Chlorophyta and Bacillariophyta were also noted in the Tiberias hot springs of Israel, where TDS concentrations exceeded 30 000 mg/l (Rahat and Dor, 1966; Carr and Whitton, 1973).

The extreme heterogeneity of algae makes generalisation about their nutritional requirements difficult. It is alleged that nitrate, phosphate, potassium, magnesium, calcium, sulphur, iron, copper, manganese, molybdenum, sodium, cobalt, vanadium and silica are required for photo-autotrophic algal growth (Provasoli and Pintner, 1960; O’Kelley, 1968). Cobalt, in particular, is known to be required in the inorganic form by some cyanobacteria (O’Kelley, 1968).

The chemical composition of thermal spring waters is influenced by the prevailing geology. Several studies on thermal springs have indicated high concentrations of minerals such as arsenic, fluoride, manganese, iron, aluminium, lithium, silica, fluoride and bromine. Hot waters circulating at depths below the earth’s surface will dissolve minerals from the rocks through which they pass. Research on South African thermal springs conducted by Rindle (1916), Kent (1949) and Olivier et al. (2008, 2011) revealed various chemical and physical conditions at different sites, including temporary hard carbonate water, oligotrophic waters or water low in mineral content. South Africa has a relatively large number of thermal springs; to date over 70 thermal springs have been identified. Limpopo Province in South Africa has 23 thermal springs – more than any of the other Provinces. Many of the South African hot springs are located on the geologically active Cape Fold Belt, the Namaqua-Natal Belt and the Limpopo Belt (Olivier et al., 2011). None of the springs are volcanic in origin, all being associated with faulting or folding. Studies on the identification of algae in thermal springs and their geochemical distribution have not previously been documented in South Africa. Knowledge of the association between the geology and algal distribution could facilitate the identification of specific thermal spring niche ecosystems. Conversely, some algae might be able to act as indicators of geology and specific heavy metals.

The aim of this paper is to describe the association between the physical and geochemical characteristics of thermal springs and the occurrence of thermophilic algae in Limpopo Province, South Africa.

## Materials and methods

### Site characteristics

The 6 thermal springs studied are located in 2 regions in the vicinity of the Soutpansberg, in the northern part of the Limpopo Province (Fig. 1). Tshipise, Sagole, Siloam and Mphephu are found in the Soutpansberg Mountains, while Eiland and Soutini are located to the east of the Drakensberg, in the Limpopo lowveld. Eiland and Tshipise have been developed as leisure resorts but the other four springs are located in rural areas.

All South African thermal springs are meteoric in origin, with waters rising to the surface along regional tensional faults. The geology of the study area includes various lithologies of the Soutpansberg Group and Karoo Supergroup, as well as the Goudplaats-Hout River Gneiss Suite and the Beit Bridge Complex (Olivier et al., 2011).

### Sampling and analysis

Field trips were undertaken during August and September 2010 to collect algae samples from 6 thermal springs in the northern part of Limpopo. Algal mat samples (Fig. 2b, 2c) were collected from the sampling sites at Mphephu (Fig. 2a), Siloam, Eiland, Tshipise, Sagole and Soutini. The thermophilic algae mat was harvested from both hard and soft substrates where these were present. The samples were stored in portable ice chests (‘cooler boxes’) while being transported to the laboratory for analysis.

### Algal identification

Microscopic observations, for identification purposes only, were conducted within 24 h of collection of samples at



**Figure 2**  
(a) Thermal spring at Mphephu (43°C);(b,c) Mat-forming algae at Siloam thermal spring (67°C)

Resource Quality Services, Department of Water Affairs, Roodeplaatt. Algae were identified with a Carl Zeiss inverted light microscope (magnification of 400 or 1 000). Sub-samples were taken until no new species were encountered. Morphological types were identified to the genus level and classification of algae was done using references in literature (Entwisle et al., 1997; Janse Van Vuuren et al., 2006).

### Physico-chemical characteristics of the springs

The source water temperatures were measured as close as possible to the eye of the spring using a temperature probe (Wissenschaftlich-Technische Werkstätten, serial No. 11311570.). The pH and electrical conductivity (EC) were measured in the field by electrodes – Wissenschaftlich-Technische Werkstätten, serial Nos. 11311570 and 09270790, respectively. Measurements were replicated thrice. Water samples collected from Mphephu, Siloam, Tshipise, Sagole and Eiland in August 2010 were analysed at an accredited laboratory (Institute for Soil, Climate and Water at the Agricultural Research Council)( ARC-ISCW) in Pretoria, while samples from Soutini, collected in September 2010, were analysed by the Council of Geosciences Laboratories. All samples were analysed for trace minerals, including copper, cobalt, zinc, manganese, boron and molybdenum, elements known to be essential micronutrients for blue-green bacteria (Castenholz, 1969). All chemical analyses were carried out by the ARC-ISCW using inductively coupled plasma – atomic emission spectroscopy (ICP–AES). Analyses were conducted on 31 micro-elements.

## Results and discussion

### Algal diversity

Algae in the six thermal springs included a heterogeneous group of unicellular, colonial, mobile and immobile, attached and free-living organisms. Figure 3 gives examples of some of the algae identified in the thermal springs in Limpopo Province, South Africa.

The algae in the 6 hot springs belonged to 5 main divisions of Protista and Monera. The algae found in each hot spring are listed in Table 1. The temperature and pH of the thermal spring waters are included in Column 1 of Table 1.

Table 1 shows that all six springs contain at least some algae. *Oscillatoria* were found in all six springs. *Anabaena* sp. was identified at all springs with the exception of Soutini and Tshipise. The springs lack homogeneity in species distribution, with only the green alga, *Oocystis*, and the diatoms *Cymbella* and *Navicula* occurring in more than one spring. The lowest number of species was found at Eiland and Tshipise. This is not unexpected since these springs have been chlorinated, and it is likely that mixing of the chlorinated water has occurred with the waters from the spring source. At Mphephu and Siloam, the Cyanophyta dominate. A large number of diatoms were found at Sagole and Soutini.

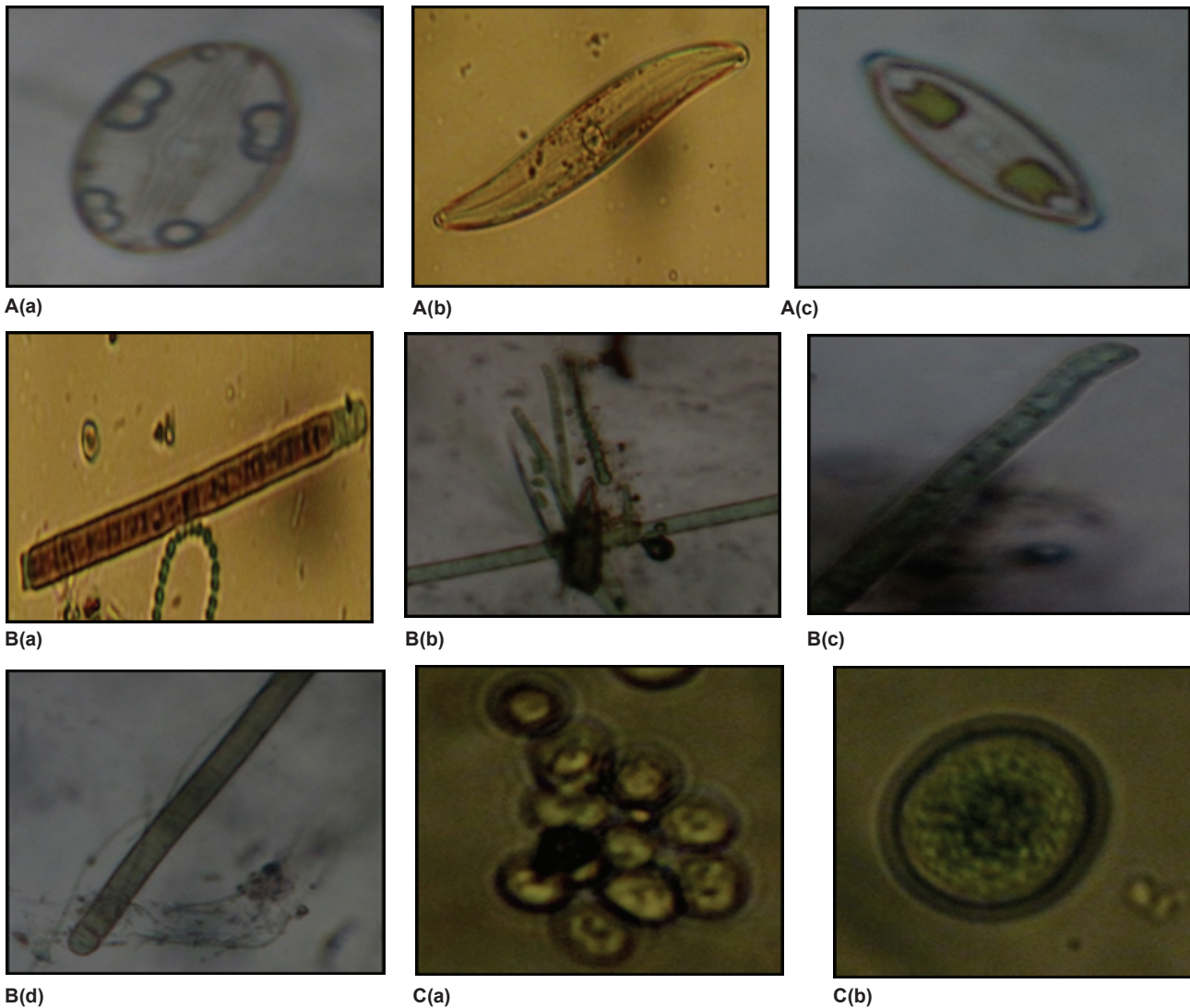
### Temperature and pH

In an attempt to establish the influence of temperature, pH, or a combination of the two, on the distribution of algae, pH and temperature zones in which the algal genera occur were superimposed to find the best ‘fit’. This was found to be in the temperature and pH ranges of 40–50°C and 7.5–8.4, respectively, as well as at 60+°C and pH >9. Table 2 shows the temperature and pH characteristics in the areas where each of the algal genera was found.

### Temperature

Source water temperatures at the thermal springs in the study area range from 40°C to 67.5°C. Tables 1 and 2 indicate that there was considerable diversity of algae communities in thermal waters with temperatures above 60°. In general, the occurrence of the cyanobacteria were not determined by the thermal characteristics of the springs, since a number of genera, such as *Oscillatoria*, *Anabaena*, *Phormidium*, *Nostoc* and *Lyngbya* were found in springs with temperatures ranging from 40°C to 60+°C. *Phormidium* sp. dominated the 60+°C temperature zone, while *Oscillatoria* sp. was distributed across the entire temperature range (40 to 67.5°C). Similar acclimatisation to high temperatures is found amongst some of the green algae. *Oocystis* sp., *Coelastrum* sp., *Chlorella* sp. and *Spirogyra* sp. were identified in waters with temperatures exceeding 60°C. With the exception of 2 genera, *Pinnularia* and *Cocconeis*, the diatoms seem to prefer lower temperatures. However, temperature per se does not appear to be a limiting factor in the distribution of algae.





**Figure 3**  
Some algae from hot springs in northern Limpopo Province

**A Bacillariophyta**

- (a) *Cyclotella kutzingeri* sp. Cells are 5–30  $\mu\text{m}$  in diameter, a common planktonic diatom found throughout the world, widespread in brackish water (Janse Van Vuuren et al., 2006)  
 (b) *Gyrosigma hassalli* sp. Cells are 60–400  $\mu\text{m}$  long and 11–40  $\mu\text{m}$  wide. Species within this genus are often found in dense algal mats on the bottom of lakes. Genus may be found in brackish water (Janse Van Vuuren et al., 2006)  
 (c) *Craticula grunow* sp. Cells are 9.5–170  $\mu\text{m}$  long and 3–35  $\mu\text{m}$  wide, species tend to be associated with fresh to brackish waters (Janse Van Vuuren et al., 2006).

**B Cyanophyta**

- (a) *Lyngbya agardh* ex Gomont sp. Diameter of trichomes varies from 1–30  $\mu\text{m}$ , inhabits fresh and brackish water. *Lyngbya* sp. has a firm, rigid sheet (Janse Van Vuuren et al., 2006). Anterior cells have thickened terminal cap (Entwisle et al., 1997).  
 (b) *Nostoc* sp.  
 (c) *Phormidium* sp. (Entwisle et al., 1997; Janse Van Vuuren et al., 2006).  
 (d) *Oscillatoria* sp. (Entwisle et al., 1997).

**C Chlorophyta**

- (a) *Coelastrum nageli* sp. (Janse Van Vuuren et al., 2006).  
 (b) *Chlamydomonas* sp. (Janse Van Vuuren et al., 2006).

**pH**

Waters of most of the thermal springs in the study area are alkaline (pH >8), with the exception of Eiland and Soutini which have pH values in the neutral zone (Table 1). According to literature, (Castenholz, 1969; Sember, 2002; Van Ginkel, 2004) cyanobacteria prefer alkaline environments. It was

thus not unexpected that mat communities at Siloam (pH = 9.5) and Sagole (pH = 9.94) had the highest cyanobacterial presence. Tables 1 and 2 indicate that *Oscillatoria*, *Anabaena*, *Phormidium*, *Nostoc* and *Lyngbya* thrive in waters with pH ranging from 7.5 to >9; however, *Nodularia*, *Schizothrix* and *Anacystis* occurred in highly alkaline waters (pH >9) in this

<b>NAME</b> <b>T=Temp. (°C)</b>	<b>Cyanobacteria</b> <b>(Cyanophyta)</b>	<b>Green algae</b> <b>(Chlorophyta)</b>	<b>Diatoms</b> <b>(Bacillariophyta)</b>	<b>Euglenoids</b> <b>(Euglenophyta)</b>	<b>Dinoflagellates</b> <b>(Dinophyta)</b>
Mphephu T = 43 pH = 8.1	<i>Oscillatoria</i> sp. <i>Anabaena</i> sp. <i>Phormidium</i> sp. <i>Nostoc</i> sp. <i>Lyngbya</i> sp.	<i>Kirchneriella</i> sp.	<i>Diadesmus</i> sp.		
Eiland T=40.1 pH = 7.6	<i>Anabaena</i> sp.				
Sagole T = 45 pH = 9.7	<i>Anabaena</i> sp. <i>Oscillatoria</i> sp.	<i>Oocystis</i> sp.	<i>Cymbella</i> sp. <i>Surirella</i> sp. <i>Pinnularia</i> sp. <i>Navicula</i> sp.	<i>Euglena</i> sp.	
Siloam T = 67 pH = 9.5	<i>Phormidium</i> sp. <i>Anacystis</i> sp. <i>Oscillatoria</i> sp. <i>Nostoc</i> sp. <i>Nodularia</i> sp. <i>Schizothrix</i> sp. <i>Anabaena</i> sp. <i>Lyngbya</i> sp.	<i>Oocystis</i> sp. <i>Coelastrum</i> sp. <i>Chlorella</i> sp. <i>Spirogyra</i> sp.	<i>Cocconeis</i> sp.		<i>Peridinium</i> sp.
Soutini T= 40 pH = 7.8	<i>Oscillatoria</i> sp.	<i>Scenedesmus</i> sp. <i>Chlamydomonas</i> sp. <i>Coelastrum</i> sp. <i>Closterium</i> sp.	<i>Cymbella</i> sp. <i>Pinnularia</i> sp. <i>Navicula</i> sp. <i>Aulacoseira</i> sp. <i>Nitzschia</i> sp. <i>Cyclotella</i> sp. <i>Gyrosigma</i> sp. <i>Craticula</i> sp. <i>Synedra</i> sp.		
Tshipise T = 58 pH = 8.9	<i>Oscillatoria</i> sp.		<i>Pinnularia</i> sp.	<i>Trachelomonas</i> sp.	

study area. The same adaptation to high pH values is true of the green algae *Oocystis*, *Coelastrum*, *Chlorella* and *Spirogyra*; the diatoms, *Cocconeis*; and the dinoflagellate, *Peridinium*. By contrast, the green algae, *Scenedesmus* and *Chlamydomonas*, in the study areas and most of the diatoms (*Synedra*, *Aulacoseira*, *Nitzschia*, *Cyclotella*, *Gyrosigma* and *Craticula*) are confined to pH neutral water (pH 7–8). In this study area the diatoms *Cymbella*, *Pinnularia* and *Navicula* did not seem to occur preferentially at any particular pH values.

#### Combination of thermal and pH conditions

An interesting picture that emerges from Table 2 is that certain algae are confined to specific temperature-pH value conditions. During this study, *Nodularia*, *Schizothrix*, *Anacystis*, *Coelastrum*, *Chlorella*, *Spirogyra*, *Cocconeis* and *Peridinium* were specific to high-temperature, highly-alkaline conditions while *Scenedesmus*, *Closterium*, *Chlamydomonas*, *Synedra*, *Aulacoseira*, *Nitzschia*, *Cyclotella*, *Gyrosigma* and *Craticula* seem not to be able to survive at temperatures and pH values exceeding 44°C and 7.9, respectively.

#### Geochemical characteristics

The main source of nutrients for algal growth in thermal waters

would be in the form of dissolved cations and anions, the occurrence of which is dependent on the geochemical mineral content of the thermal water. Table 3 provides the concentrations of selected macro- and micro-elements found in the six thermal springs.

Sodium, potassium, magnesium and calcium, as well as nitrates, phosphates and sulphates, were present in very low concentrations in all springs, except for Eiland and Soutini. High sulphate levels were measured at Eiland (143.63 mg/l) and Soutini (759 mg/l), while maximum sulphate concentration recorded at most other springs were 53 mg/l or less (Table 3). Nitrate concentrations were negligible, except at Eiland, Soutini and Mphephu. Phosphates were absent or present at very low concentrations in the source waters of all springs, with the exception of Eiland.

Table 3c indicates the concentration of trace elements at the springs. It is noticeable that the concentrations of boron were low (< 60 µg/l) at Sagole, Siloam and Mphephu, but much higher (more than 200 µg/l) at Tshipise and Eiland. Nickel levels were also high at Tshipise. Most of the other trace elements were considerably higher at Eiland and Soutini, mirroring the pattern of the macro-element concentrations. The trace elements necessary for algal growth, namely, copper, molybdenum, manganese, cobalt and vanadium, are found at

Table 2 Temperature and pH ranges for algal genera					
Temperature (°C) pH	40–44 7.5–7.9	45–49 8.0–8.4	50–54 8.5–8.9	55–59	60+ 9.0–9.9
<b>Blue-green bacteria</b>					
<i>Oscillatoria</i>	*	*	*		*
<i>Anabaena</i>	*	*			*
<i>Phormidium</i>		*			*
<i>Nostoc</i>		*			*
<i>Lyngbya</i>		*			*
<i>Nodularia</i>					*
<i>Schizothrix</i>					*
<i>Anacystis</i>					*
<b>Green algae</b>					
<i>Kirchneriella</i>		*			
<i>Oocystis</i>					*
<i>Coelastrum</i>					*
<i>Chlorella</i>					*
<i>Spirogyra</i>					*
<i>Scenedesmus</i>	*				
<i>Chlamydomonas</i>	*				
<b>Diatoms</b>					
<i>Diadesmus</i>		*			
<i>Cymbella</i>	*				*
<i>Surirella</i>					*
<i>Pinnularia</i>	*		*		*
<i>Navicula</i>	*				*
<i>Cocconeis</i>					*
<i>Synedra</i>	*				
<i>Aulacoseira</i>	*				
<i>Nitzschia</i>	*				
<i>Cyclotella</i>	*				
<i>Gyrosigma</i>	*				
<i>Craticula</i>	*				
<b>Euglenoids</b>					
<i>Euglena</i>					*
<i>Trachelomonas</i>			*		
<b>Dinoflagellates</b>					
<i>Peridinium</i>					*
where:					
pH occurrence zone					*
Temperature occurrence zone					
Zone where pH and temperature coincide					
Exclusive temperature and pH zone for specific genus					

relatively low concentrations (or may even be absent) in many of the springs – the exceptions being Eiland and Soutini.

The Cyanophyta (*Phormidium*, *Microcystis*, *Oscillatoria*, *Nostoc*, *Nodularia*, *Lyngbya*, *Anabaena* and *Schizothrix*), Chlorophyta (*Oocystis*, *Chlorella* and *Spirogyra* spp.) and Bacillariophyta (*Pinnularia*) seem to be well adapted for survival in high fluoride concentrations in the different springs. The iodine concentration of > 4 111 µg/l does not appear to affect the algae living at Eiland. Clearly, Soutini and Eiland have exceptionally high concentrations of all macroelements and anions. It is interesting to note that *Scenedesmus*, *Closterium*, *Chlamydomonas* (green algae), *Synedra*, *Aulacoseira*, *Nitzschia*, *Cyclotella*, *Gyrosigma* and *Craticula*

(diatoms) occur exclusively at Soutini (Table 1).

Although the inorganic composition of the six thermal spring waters may influence the composition of the algal ecosystems, patterns were difficult to distinguish. For this reason, the possible association between the underlying geology and the algal composition of the springs was investigated.

## Geology

Table 4 provides a summary of the prevailing geology at surface and depth at the springs.

Olivier et al. (2008, 2011) showed that the mineral composition of the thermal waters probably reflects the geological formations that occur at the depth of origin of the thermal spring water rather than surface geology. Therefore the type of rock occurring at the surface of the earth does not necessarily influence the chemical composition of thermal spring waters.

Mphephu and Siloam both occur within the Soutpansberg Group. Mphephu is a feature of the Wyllie's Poort and Nzhelele Formations while, barely 5 km from Mphephu, the thermal spring at Siloam is underlain by basaltic lava of the Sibasa Formation (Olivier et al., 2011). Potassium (Mg<sup>2+</sup>) and calcium (Ca<sup>2+</sup>) may be associated with basaltic intrusions. These ions are also present in higher concentrations in waters from Mphephu than in those from Siloam and might derive from sandstones, quartzites and some basaltic intrusions.

Even though Tshipise and Sagole are geographically far apart, both of these thermal springs are underlain by rocks of the Karoo Supergroup. Sagole is underlain by sedimentary rocks of the Mikambeni Formation and Madzaringwe Formation, while Tshipise is underlain by volcanic rocks of the Letaba Formation. Sagole is associated with micaceous sandstone, siltstone and shale (Johnson et al., 2006). The Letaba Formation immediately underlying the spring at Tshipise comprises mainly basalt with minor andesite and sandstone. The spring also lies close to a dolerite intrusion. Compared to the other springs, the waters of Tshipise and Sagole are relatively poor in magnesium.

The underlying geology at Eiland (Letaba) and Soutini is grey biotite gneiss and micmatite and Eiland (and Soutini) are underlain by the Goudplaats-Hout River Gneiss Suite, which can explain the high potassium levels in these waters. Little is known about the geology at Soutini, but in view of the chemical characteristics of the waters it is probably similar to that of Eiland. Most of the ions in the Eiland hot spring could have been acquired from the granite, and, to a lesser degree, the diabase and basic rocks such as amphibolites present in the granite.

These springs (Eiland and Soutini) are saline and have extremely high concentrations of sodium, potassium, calcium, chloride and sulphate, as indicated by TDS values exceeding 1 500 mg/l. The sodium (Na<sup>+</sup>) concentrations at the springs, with the exception of Eiland, probably originate from quartz and sodium-rich plagioclase feldspars from the sandstones and shales.

Certain algae are characteristic of specific geochemical environments. Figure 3 attempts to illustrate the possible relationship between the geology at depth (and therefore the mineral content of the water) and the distribution of algae.

Only *Oscillatoria* was found in all spring waters. Cyanophyta (cyanobacteria) were more prevalent in waters from Mphephu, and in the basaltic waters from Siloam, than at any of the other springs. The Cyanophytes, (*Phormidium*, *Nostoc*, *Lyngbya*, *Nodularia*, *Schizothrix* and *Anacystis*) were only present in springs underlain by the Soutpansberg Group, i.e. at Mphephu and Siloam (Group A in Fig. 3).

	Mphephu	Siloam	Sagole	Tshipise	Eiland	Soutini
Temperature (°C)	43	67.5	45	58	42	40.1
pH	8.08	9.51	9.70	8.85	7.63	7.81
TDS (mg/l)	199.36	197.3	39.0	460.56	1 937.2	1 510.0
Conductivity (mS/m)	44.0	39.0	39.0	81.0	230.0	297.0
<b>a) Cations (mg/l)</b>						
Sodium	44.37	66.24	65.15	156.31	621.88	3 487.34
Potassium	1.14	2.82	1.10	4.25	21.79	31.13
Calcium	13.73	1.40	1.31	5.58	53.61	240.23
Magnesium	11.25	1.30	0.07	0.17	9.37	80.89
<b>b) Anions (mg/l)</b>						
Fluoride	3.16	6.11	1.0	5.63	2.24	8
Nitrate	2.12	0	0	0.61	2.69	2.5
Chloride	39.38	44.35	47.85	168.97	982.62	5523
Sulphate	9.26	2.69	18.20	53.17	143.63	759
Phosphate	0	0–2.69	0	0	24.86	<2.5
Carbonate	0	0–14.40	18.0	6.0	0	n.a.
<b>c) Selected trace elements (µg/l)</b>						
Copper	0	0	0	0	3.61	68
Cobalt	0	0.05	0.01	0.10	2.07	2
Manganese	0	0.75	0.20	0	3.13	408
Molybdenum	0.91	2.23	1.06	1.41	3.74	n.a.
Boron	45.92	57.91	56.48	200.60	267.60	10
Zinc	1.95	3.46	2.05	2.48	1 738	<300
Iodine	3.25	93.14	6.41	115.20	4 111.0	n.a.
Selenium	0	0	0.20	2.35	2.83	101
Nickel	0	0	0	37.19	2.83	<50
Vanadium	10.64	2.30	0.42	1.81	60.86	117
Silica	n.a.	n.a.	n.a.	n.a.	39 878	57 022
Rubidium	n.a.	n.a.	n.a.	n.a.	130	102
Uranium	0.45	0	0	0	8.53	24

Sampling site	Description of surface geology	Lithostratigraphic unit
Mphephu*	Sandstone and quartzite	Wyllie's Poort and Nzhelele Formations, Soutpansberg Group
Siloam*	Basalt, minor tuff	Sibasa Formation, Soutpansberg Group
Tshipise*	Basalt, minor andesite Cream Scoured sandstone Dolerite sills and dykes	Letaba Formation, Lebombo Group, Karoo Supergroup Tshipise Member, Clarens Formation, Karoo Supergroup Karoo dolerite
Sagole*	Mudstone, shale, subordinate micaceous sandstone Shale, carbonaceous shale, siltstone, micaceous sandstone	Mikambeni Formation Madzaringwe Formation, Karoo Supergroup
Eiland**	Leucocratic biotite gneiss	Goudplaats – Hout River Gneiss Suite

(According to the Geological Survey: 1:250 000 Messina\* and Tzaneen\*\* Map sheets)

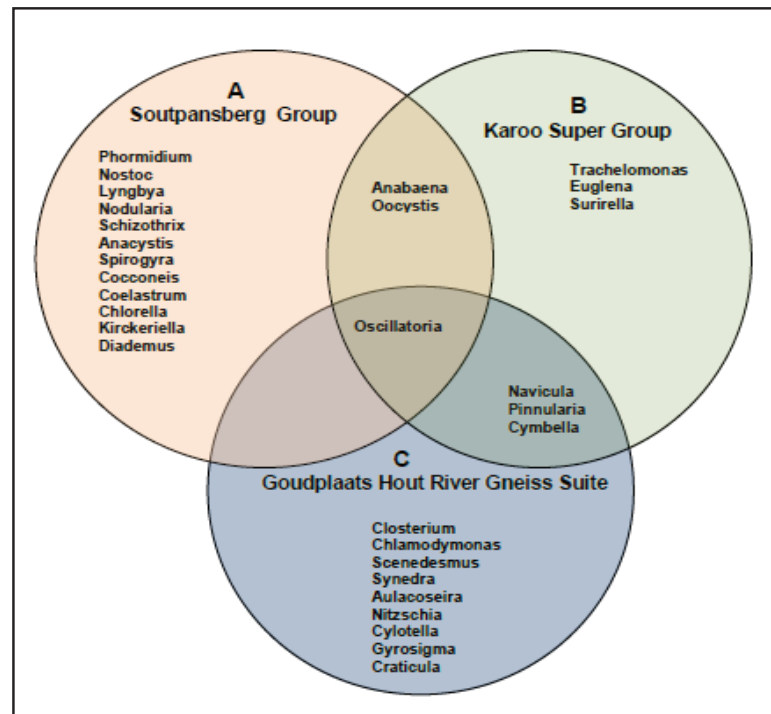
Interestingly, the Euglenoids are exclusive to waters from Sagole and Tshipise, which has circulated through sandstone-rocks of the Karoo Supergroup (Group B in Fig 3)-, rich in a calcite-type geological formation. Conversely, diatoms *Synedra*, *Aulacoseira*, *Nitzschia*, *Cyclotella*, *Gyrosigma* and *Craticula*, and the green algae *Scenedesmus*, *Closterium* and *Chlamydomonas*, are characteristic of the Goudplaats-Hout

River Gneiss Suite (Group C).

The thermal springs at Eiland and Tshipise are used as tourist resorts. At these resorts the thermal sources are enclosed and thermal waters are chlorinated. The development and chlorination of these spring waters may have created ecological niche communities for algae, such as *Anabanea* sp. at Eiland and *Oscillatoria* sp. at Tshipise (Fig. 4).



**Figure 4**  
Geological distribution of algae  
A = Mphephu and Siloam;  
B = Tshipise and Sagole;  
C = Eiland and Soutini



## Conclusions

This study aimed to assess the algal diversity in thermal springs in Limpopo Province, to give insight into the occurrence, distribution and external factors influencing specific genera in hot spring waters in South Africa. Thermal waters of 6 sites, namely, Mphephu, Siloam, Sagole, Tshipise and Soutini, were analysed for physical and geochemical properties that may influence species diversity within these thermal waters. The results offer a perspective on the algal biodiversity of mineral waters.

Morpho-typical analysis revealed a limited diversity of phytoplankton groups. Algae from 5 different phyla, namely Cyanobacteria (cyanobacteria), Bacillariophyta, Chlorophyta, Euglenophyta and Dinophyta were identified from the selected thermal springs, with Cyanobacteria (cyanobacteria) most often present in the selected thermal springs.

There was a high degree of specificity of algal taxa with regard to the geochemical environment. Variations in temperature, pH and geochemistry of the lithostratigraphic units appear to be the governing determinant in algal distribution for the study area. Results confirm the role that various minerals play in the geo-chemical distribution of algae in thermal springs.

Geochemically, blue-green algae dominated the water of the Soutpansberg Group. It was noticeable that algae in the Soutpansberg Group are adapted to scalding alkaline waters with pH values exceeding 9 and temperatures exceeding 60°C. Euglenoids occur in springs underlain by rocks of the Karoo Supergroup. Most of the algae in springs originating in the Karoo Super Group seem to prefer a narrow range of conditions, i.e., neutral pH waters (~8) with temperatures of 40–50°C; whereas the diatoms span springs arising in the Karoo Supergroup and the gneisses of the Goudplaats-Hout River Suite. The algae found in springs in the Goudplaats-Hout River Suite can be classified as thermohalophiles.

The community distribution of algae in the selected springs thus suggests not only the influences of geographical isolation

due to mineral content, but, also the probable influence of human activity on species dominance in these environments. Recreational or industrial interference in ecosystems of thermal springs may alter the natural biodiversity and promote the production of neurotoxic-forming cyanobacterial isolates such as *Oscillatoria*, with consequential health-risk implications to users.

## Acknowledgements

This research was supported through a grant from the Water Research Commission (WRC Project K5/1959/1). The authors thank the Department of Water Affairs for assistance with the analysis of the samples and the Hot Water Spring (HWS) team members for their involvement and support during field trips.

## References

- ATLAS RM and BARTHA R (1987) *Microbial Ecology* (2<sup>nd</sup> edn.). The Benjamin Publishing Company, Menlo Park, California.
- CARR N and WHITTON B (1973) *The Biology of Blue-Green Algae. Botanical Monographs Volume 9*. University of California Press, Berkeley.
- DALLAS H (2008) Water temperature and riverine ecosystems: An overview of knowledge and approaches for assessing biotic responses, with special reference to South Africa. *Water SA* **34** (3) 393–404.
- ENTWISLE T, SONNEMAN J and LEWIS S (1997) *Freshwater Algae in Australia. A Guide to Conspicuous Genera*. Sainty and Associates Pty. Ltd., Potts Point.
- JANSE VAN VUUREN S, TAYLOR J, GERBER A and VAN GINKEL C (2006) *Easy Identification of the Most Common Freshwater Algae*. North-West University, Potchefstroom.
- JOHNSON MR, VAN VUUREN CJ, VISSER JNJ, COLE DI, WICKENS H DE V, CHRISTIE ADM, ROBERTS DL and BRANDL G (2006) Sedimentary rocks of the Karoo Supergroup. In: Johnson MR, Anhaeusser CR and Thomas RJ (eds) *The Geology of South Africa*. Geological Society of South Africa, Council for Geoscience, Pretoria. 461–499.



- KENT LE (1949) The thermal waters of the Union of South Africa and South West Africa. *Trans. Geol. Soc. S. Afr.* **52** 231–264.
- MANN J and SCHLICHTING J (1967) *Benthic Algae of Selected Thermal Springs in Yellowstone National Park*. Blackwell Publishing, Oxford.
- MUR L, SKULBERG O and UTKILEN H (1999) Cyanobacteria in the environment. In: Chorus I and Bartram J (eds.) *Toxic Cyanobacteria in Water*. E & FN Spon/Springer-Verlag KG, London. 15–40.
- O'KELLEY J (1968) Mineral nutrition of algae. *Annu. Rev. Plant Physiol.* **19** 89–112.
- OLIVIER J, VAN DER WALT I J and VAN NIEKERK H J (2008) Physical and chemical characteristics of thermal springs in the Waterberg area in Limpopo Province, South Africa. *Water SA* **34** (2) 163–174.
- OLIVIER J, VENTER J and JONKER C (2011) Thermal and chemical characteristics of hot water springs in the northern part of the Limpopo Province, South Africa. *Water SA* **37** (4) 427–436.
- OREN A, IONESCU D, HINDIYEH M and MALKAWI H (2009) Morphological, phylogenetic and physiological diversity of cyanobacteria in the hot springs of Zerka Ma'in, Jordan. *BioRisk* **3** 69–82.
- PROVASOLI L and PINTNER I J (1960) Artificial media for freshwater algae: problems and suggestions. In: The Pymatuning symposia in ecology: the ecology of algae, Pymatuning Laboratory of Field Biology. *Univ. Pittsburgh Special Publ.* **2** 84–96.
- PELCZAR J, CHAN ECS and KRIEG NR (1988) *Microbiology*. McGraw-Hill Book Co., Singapore.
- PRASAD B and SRIVASTAVA N (1965) Thermal algae from Himalayan hot springs. *Proc. Inst. Sci. India* **31** (1–2) 45–53.
- RAHAT M and DOR I (1966) The hidden flora of a lake. *Hydrobiologia* **31** (2) 186–192.
- RINDL MR (1916) The Medicinal Springs of South Africa (Supplement). *S. Afr. J. Sci.* **13** 528–552.
- SECKBACH J (2007) *Algae and Cyanobacteria in Extreme Environments*. Springer, Dordrecht.
- SEMBER C (2002) The effect of nutrient levels and ratios on the growth of *Microcystis aeruginosa* and microcystin production. Unpublished Masters dissertation, University of Port Elizabeth.
- SOMPONG U, HAWKINS P, BESLEY C and PEERAPORNPIAL Y (2005) The distribution of cyanobacteria across physical and chemical gradients in hot springs in northern Thailand. *FEMS Microbiol.* **52** (3) 365–376.
- STOCKNER JG (1967) Observations of thermophilic algal communities in Mount Rainier and Yellowstone National Park. *Limnol. Oceanogr.* **12** (1) 13–17.
- VAN GINKEL C (2004) A National survey of the incidence of cyanobacterial blooms and toxin production in major impounds. Department of Water Affairs and Forestry, Pretoria.
- WINTERBOURN M (1969) The distribution of algae and insects in hot spring thermal gradients at Waimangu, New Zealand. *N.Z. J. Mar. Freshwater Res.* **3** (3) 459–465.

