

The Enviro Loo...



How it works?

1 Waste enters the container via a ceramic toilet bowl. Liquid waste drains to the bottom of the container while solid waste remains on the drying plate.

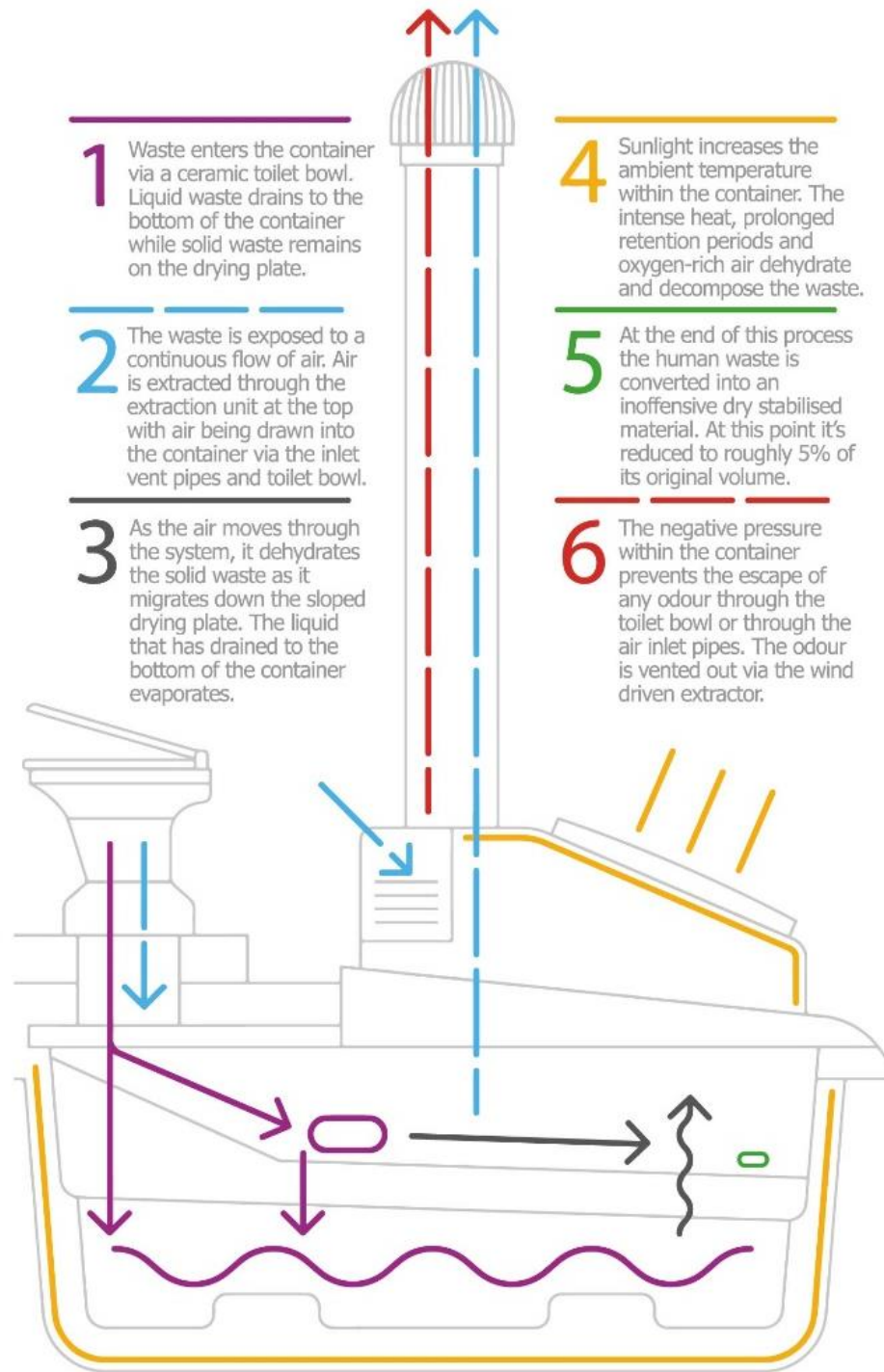
2 The waste is exposed to a continuous flow of air. Air is extracted through the extraction unit at the top with air being drawn into the container via the inlet vent pipes and toilet bowl.

3 As the air moves through the system, it dehydrates the solid waste as it migrates down the sloped drying plate. The liquid that has drained to the bottom of the container evaporates.

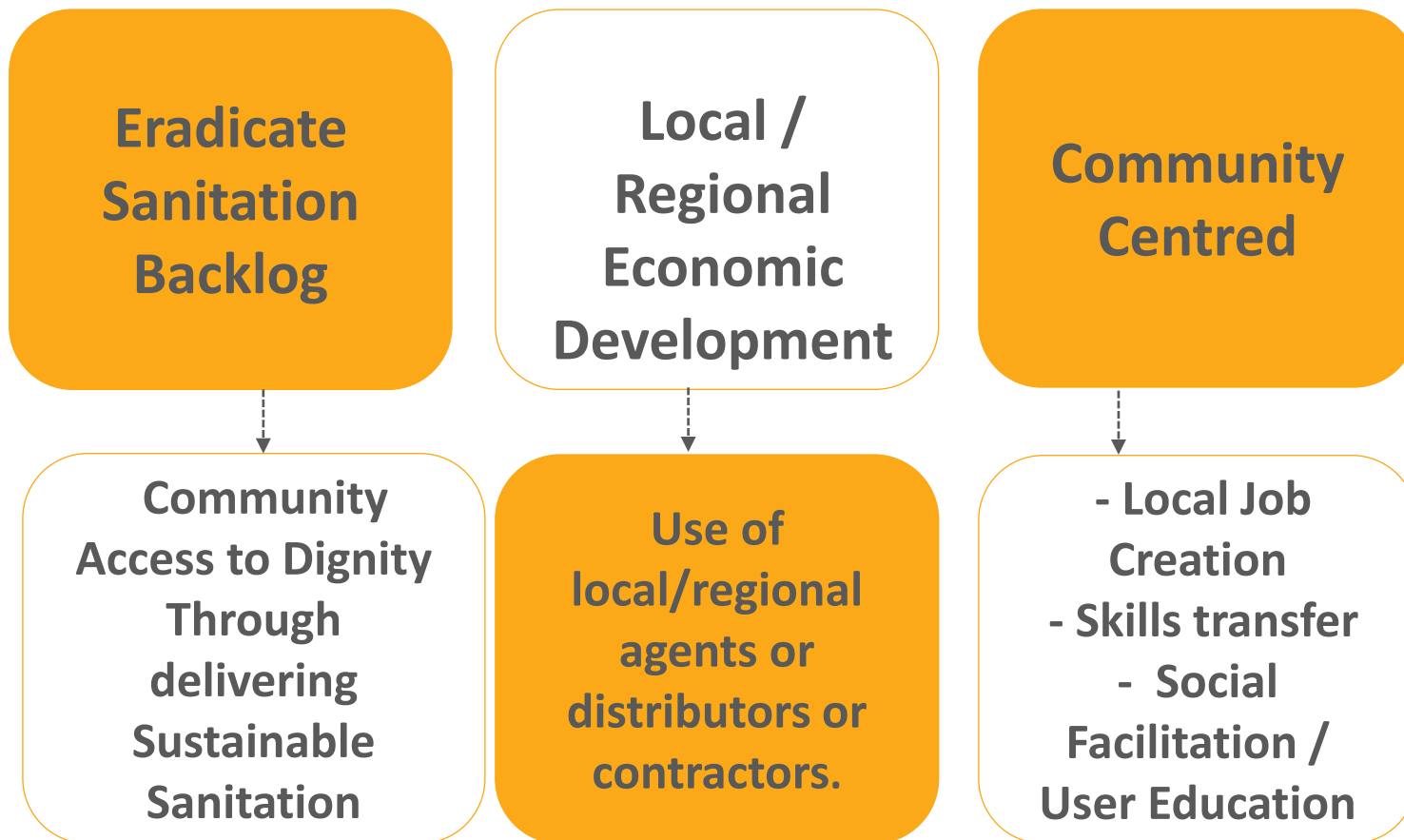
4 Sunlight increases the ambient temperature within the container. The intense heat, prolonged retention periods and oxygen-rich air dehydrate and decompose the waste.

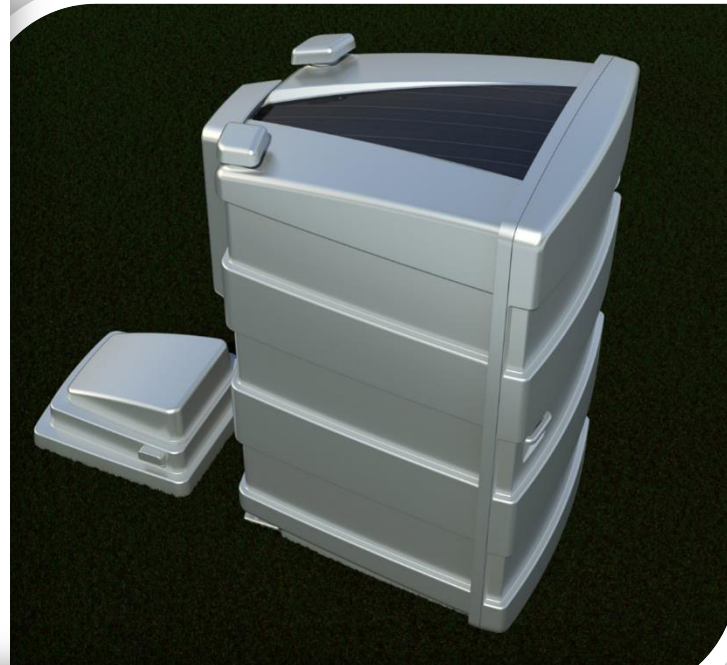
5 At the end of this process the human waste is converted into an inoffensive dry stabilised material. At this point it's reduced to roughly 5% of its original volume.

6 The negative pressure within the container prevents the escape of any odour through the toilet bowl or through the air inlet pipes. The odour is vented out via the wind driven extractor.



Enviro Loo adopts a partnership approach when delivering sanitation solutions...





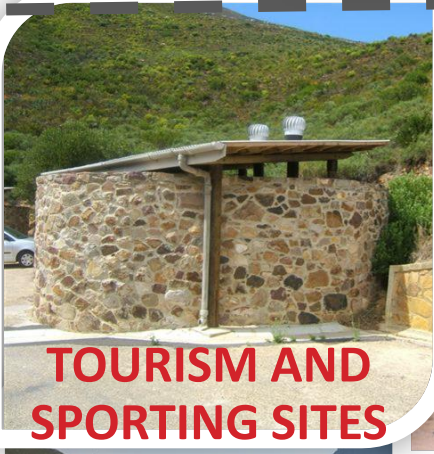
Enviro Loo



HOUSING



**SCHOOLS
AND PUBLIC
FACILITIES**



**TOURISM AND
SPORTING SITES**



URINAL

